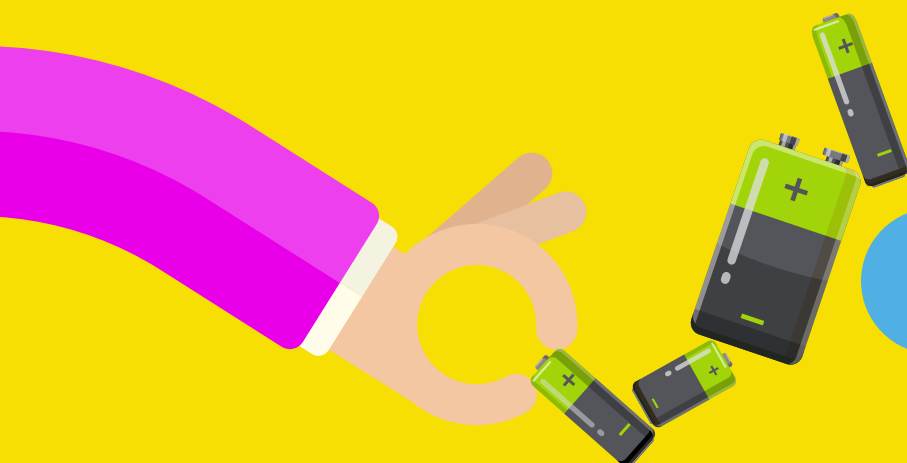




Waste Battery Presentation Guide



All portable waste batteries can be collected/
treated FOC under the **WEEE Ireland Battery
Collection Scheme**



Portable Unsorted Batteries

LoW Code

20 01 33*

ADR Required

No

WTF Required

WI Exemption

Dangerous Goods

Note Required

No

Vermiculite

No

[Book A Collection Here](#)



Packaging & Labelling Requirements

Portable Unsorted Batteries are to be packaged in either 60L UN-Approved drums or WEEE Ireland Battery boxes. Your site may be provided with a CAS unit for Mixed Household Batteries which contains these 60L UN Approved drums. All drums must have the "Household Batteries Only" label which bears the mark "Contains Lithium Batteries for Recycling". Please do not overfill Battery Boxes or 60L UN-Approved drums and ensure that all lids are closed. Small (pocket sized) electrical Equipment containing batteries may also be included in this collection stream.



Ni-Cad - Portable

LoW Code

16 06 02*

ADR Required

>1,000kg

WTF Required

WI Exempt

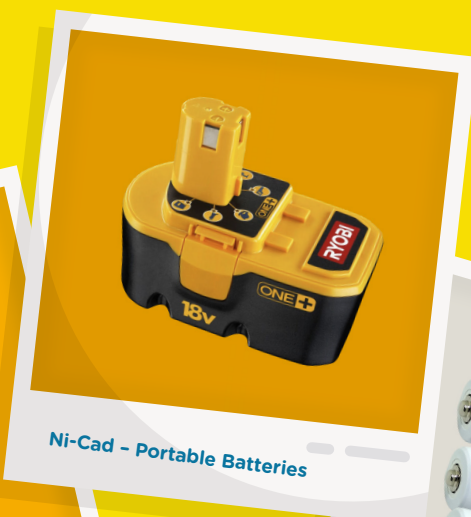
Dangerous Goods

Note Required

No

Vermiculite

Quantity dependant



Book A Collection Here

Packaging & Labelling Requirements

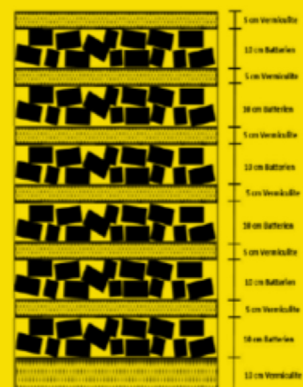
Portable Ni-Cad batteries can be placed in UN approved 60L drums. Customers with large volumes of material would require steel drums with liners & vermiculite. Batteries must be secured so that they do not slip, fall or leak when in transit or during unloading operations. Batteries must be packaged appropriately to prevent against short circuit. The housing/casing of batteries must be intact/undamaged as they contain hazardous materials. UN2800 labels should be affixed to the container.

When being packed in a steel drum with a liner, please prepare a layer of vermiculite of approximately 10cm at the bottom of the barrel and then stack a layer of batteries *approximately 10cm) followed by another later of vermiculite and so on until the drum is full.

Filling material:

Vermiculite

Filling of a barrel:



Lithium Metal Batteries & Lithium Metal Button Cell Batteries (Portable)

LoW Code

16 06 05

ADR Required

>333kg

WTF Required

WI Exempt

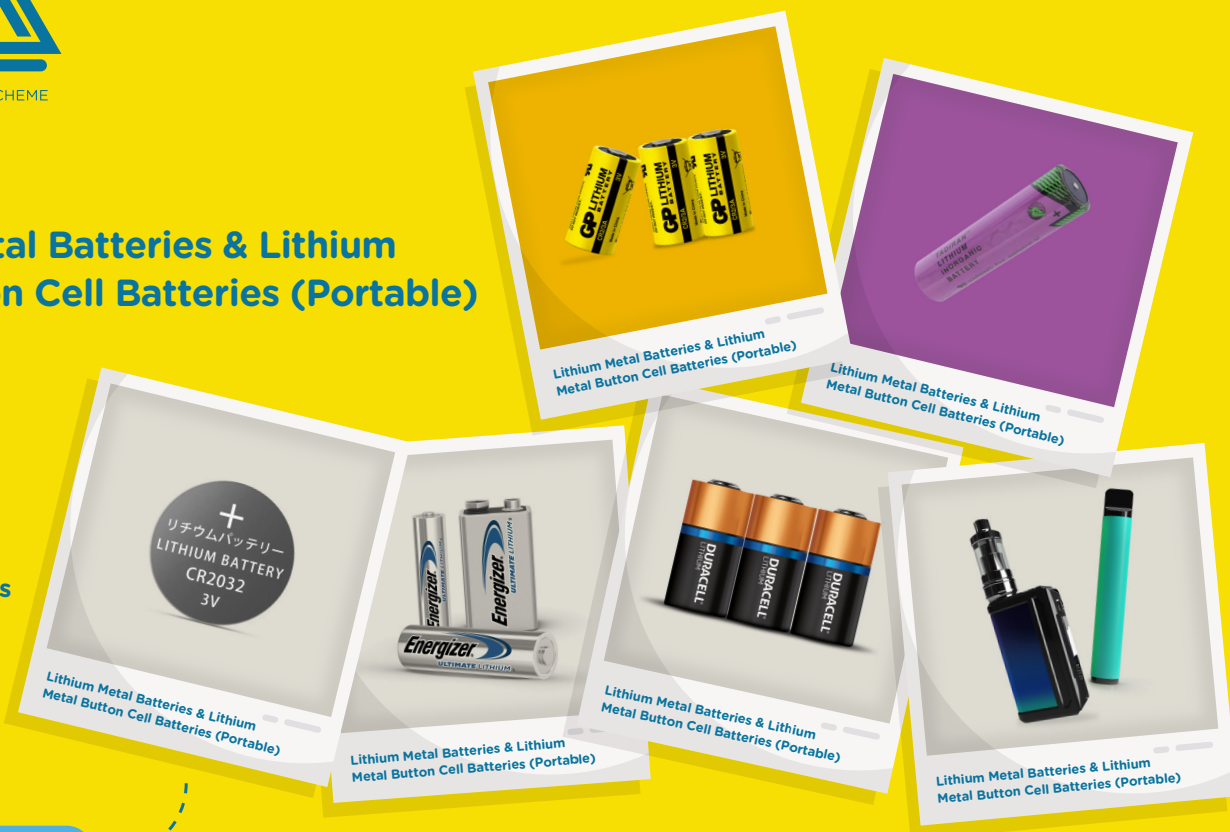
Dangerous Goods

Note Required

Yes

Vermiculite

Yes



[Book A Collection Here](#)

Packaging & Labelling Requirements

Batteries and vape devices should be placed carefully in 60L UN-approved plastic drums. Batteries must be packaged appropriately to prevent against short circuit. The housing/casing of batteries must be intact/undamaged as damaged packs can increase the risk of short circuit.

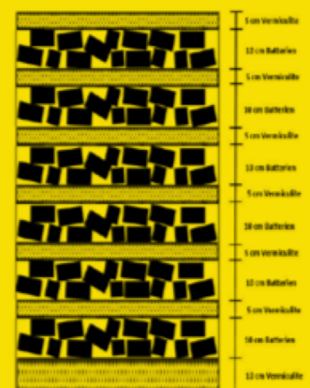
When being packed in drums, please prepare a layer of vermiculite of approximately 10cm at the bottom of the barrel and then stack a layer of catteries *approximately 10cm) followed by another later of vermiculite and so on until the drum is full.

Class 9 Hazardous label UN 3090 bust be affixed to the drum and must clearly display Lithium Batteries for recycling.

Filling material:

Vermiculite

Filling of a barrel:



Portable Lithium Ion & Lithium Polymer Batteries

LoW Code

16 06 05

ADR Required

>333kg

WTF Required

WI Exempt

Dangerous Goods

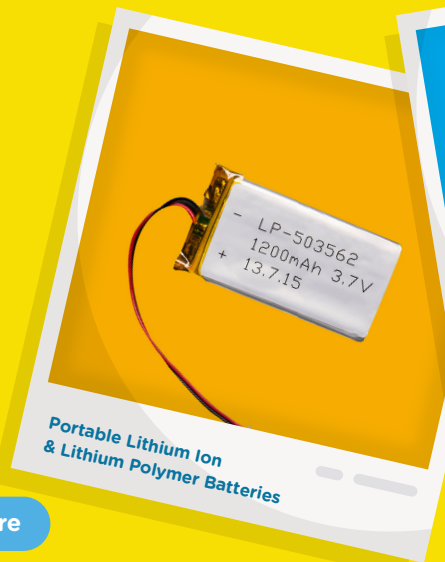
Note Required

Yes

Vermiculite

Yes

Book A Collection Here



Packaging & Labelling Requirements

Batteries should be placed carefully in 60L UN-approved plastic drums. Batteries must be packaged appropriately to prevent against short circuit. The housing/casing of batteries must be intact/undamaged as damaged packs can increase the risk of short circuit.

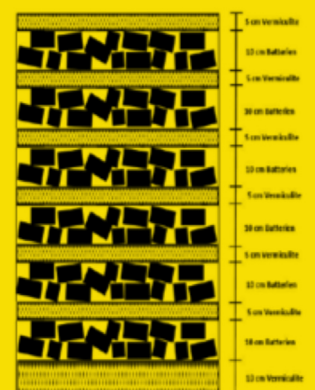
When being packed in drums, please prepare a layer of vermiculite of approximately 10cm at the bottom of the barrel and then stack a layer of catteries *approximately 10cm) followed by another later of vermiculite and so on until the drum is full.

Class 9 Hazardous label UN 3480 must be affixed to the drum and must clearly display Lithium Batteries for recycling.

Filling material:

Filling of a barrel:

Vermiculite



Fence Batteries

LoW Code

16 06 04

ADR Required

No

WTF Required

No

Dangerous Goods

Note Required

No

Vermiculite

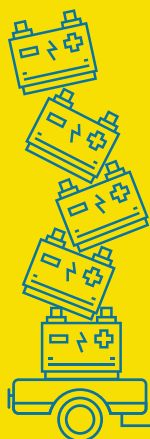
No

[Book A Collection Here](#)



Packaging & Labelling Requirements

Farm Fence Batteries are to be packaged in 1 tonne bulk farm fence battery boxes with terminals facing upwards. Fence Batteries can also be placed onto a pallet with terminals facing upwards. Stack neatly and secure with shrink wrap. Stack no more than 5 high.



Lead Acid Batteries

LoW Code

16 06 01*

ADR Required

>1,000kg

WTF Required

Yes

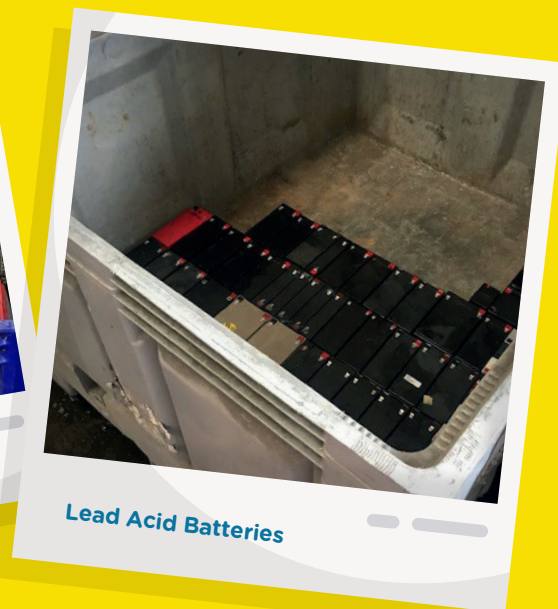
Dangerous Goods

Note Required

Yes

Vermiculite

No



Packaging & Labelling Requirements

To be packed in a 1m3 pallet box with terminals facing upwards. Measures to be taken to prevent from short circuit i.e., any loose cables removed, and cover terminals where possible. Battery boxes must be labelled with a hazardous class labels UN2794 and UN2800.



Ni-Cad - Industrial

LoW Code

16 06 02*

ADR Required

>1,000kg

WTF Required

Yes

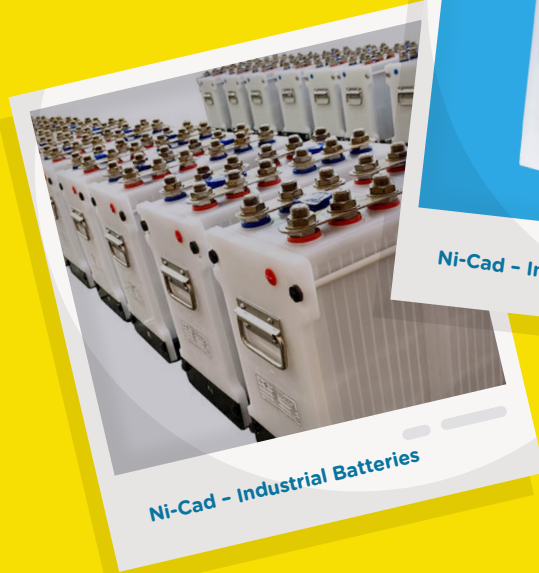
Dangerous Goods

Note Required

Yes

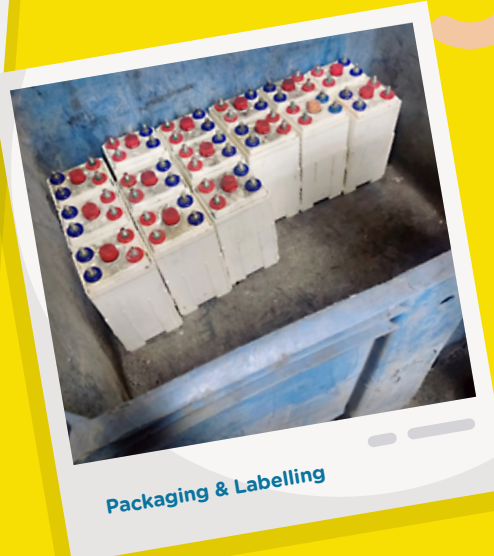
Vermiculite

No



Packaging & Labelling Requirements

Industrial Ni-Cad batteries are to be placed 1m3 pallet boxes with the terminals facing upwards. Measures to be taken to prevent from short circuit i.e., any loose cables removed, and cover terminals where possible. All batteries should be packed tightly to prevent them from moving during transport. UN2795 label must be placed on the bin and lid closed.



High Voltage Li-Ion Batteries

LoW Code

16 06 05

ADR Required

Yes

WTF Required

No

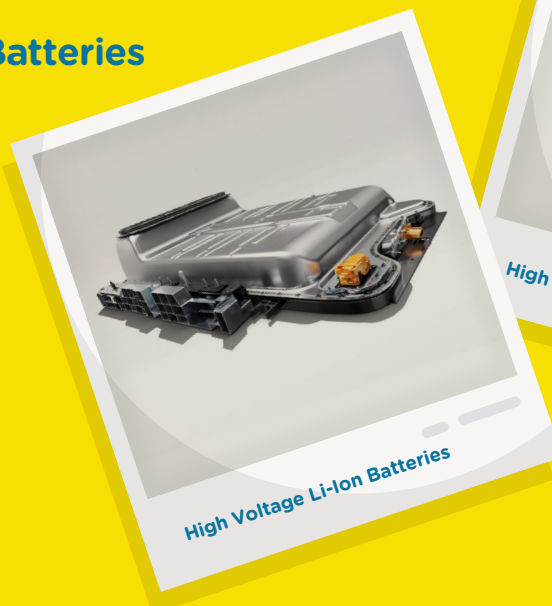
Dangerous Goods

Note Required

Yes

Vermiculite

Yes



As much information regarding the battery must be gathered prior to collection. KMK shall request all information regarding the battery i.e., condition (end of life, damaged/defective etc.), size of the battery, packaging information on battery, engineer's report regarding the status of the battery (where applicable).

Packaging & Shipping Requirements

Guidance on specific packaging requirements will be provided based on the engineer's report. Once KMK receive, appropriate transport arrangements will be made.



KMK Metals Recycling provide collection / treatment service for all Industrial, EV and Automotive batteries. Contact KMK directly for quotation.

Light Means of Transport (LMT) Batteries and Lithium Packs

LoW Code

16 06 05

ADR Required

>333kg or >100Wh

WTF Required

WI Exempt

Dangerous Goods

Note Required

Yes

Vermiculite

Yes



Packaging & Labelling Requirements

LMT Batteries shall be placed into a plastic drum liner in a UN Approved Steel drum. Batteries must be packed appropriately to prevent short circuit. The housing/casing of the batteries must be intact/undamaged as packs can increase the risk of short circuit.

Batteries should be assessed prior to placing into drums, they should be placed upright in drums with adequate spacing in between. In the event that the housing/casing of the unit is damaged or not intact, extra steps must be taken to prevent short circuit during transport (taping of exposed terminals or loose wires). For Damaged/Defective Batteries, please contact KMK Metals Recycling Ltd. directly for advice on the safe packaging of this material.

When being packed in drums, drums shall be prefilled with vermiculite (approximately ½ full). Class 9 Hazardous label UN 3480 must be affixed to the drum and must clearly display Lithium Batteries for recycling.





Light Means of Transport, E-bikes & E-scooters (LMT) & Lithium Battery Packs Collection Protocol

Introduction

WEEE Ireland is committed to promoting the safe and responsible management of batteries used in Light Means of Transport (LMT), including e-bikes, e-scooters, hoverboards, other motorized personal transportation devices and Lithium Battery packs. This protocol outlines the steps and requirements for becoming a collection point, safely storing and packaging & arranging collections for waste LMT batteries / Lithium Battery packs.

Managing these batteries correctly is essential to ensure safety, regulatory compliance, and environmental protection. **Retailers who sell WEEE & Batteries have a legal obligation to take back products for recycling FREE OF CHARGE on a like for like basis.**



Becoming a Collection Point

To register as a collection point, please contact WEEE Ireland at operations@weeeireland.ie with the following details:

- Name and address of your company or store, including Eircode.
- Contact details (contact name, phone number, and email address).

Storage and Containers

WEEE Ireland will supply the required materials to ensure the safe storage of waste LMT batteries / Lithium Battery Packs including:

- UN-approved drum with vented lid: Designed to safely store and transport waste batteries.
- Plastic liner: To line the drum & prevent leakage.
- Vermiculite: Insulating material used to create separation between battery packs / cells.

Ensure batteries are stored in the provided containers in accordance with safety guidelines. If you encounter damaged or defective batteries, additional precautions may be required. Contact WEEE Ireland for advice on handling such cases.





Packaging Instructions for Steel Drums

When using steel drums for packaging batteries, please follow these steps carefully:

- Place the drum on a solid, dry, and level surface.
- Store in a cool, dry, sheltered area if possible

Insert the provided plastic liner, allowing it to overlap the edges of the drum.

- Add a layer of vermiculite at the bottom of the drum to create an insulating base.
- Place batteries vertically in the drum to maximize space and ensure adequate spacing between packs
- For damaged or defective batteries, wrap them in plastic shrink wrap or film before placing them in the drum.
- Once you have placed the battery pack inside the drum ensure to seal the drum immediately.
- Close the plastic liner, secure it with tape, and place the drum lid firmly.
- Use the clamp to secure the lid tightly.
- Batteries must be carefully placed in UN-approved drums with the provided plastic liner.
- Batteries should be packaged to prevent short circuits. Ensure the housing/casing of the batteries is intact and undamaged, as damaged packs pose a higher risk of short circuits.
- Drums will come pre-filled with vermiculite. Batteries must be placed vertically, with sufficient spacing between each pack to prevent contact.
- Drum must be kept closed all time

Classification of Waste Batteries

Waste LMT / Lithium Battery packs can be categorized as follows:

- Defective Batteries: Batteries with faults that prevent them from functioning properly.
- Damaged Batteries: Batteries with visible external damage that may pose safety risks.
- Critical Damage: Batteries exhibiting signs of severe issues, such as gas emissions, smoke, or fire hazards. (For these cases, additional safety measures and emergency responses are required.)

In the case of critical damage (e.g., smoke, gas, flames), follow emergency protocols and contact emergency services immediately.

Booking a Collection

When your drum(s) are full, email operations@weeeireland.ie or log the order on WEEE Ireland website to request a collection.

WEEE Ireland will arrange the collection & replacement collection units will be provided if required.

Accepted Batteries

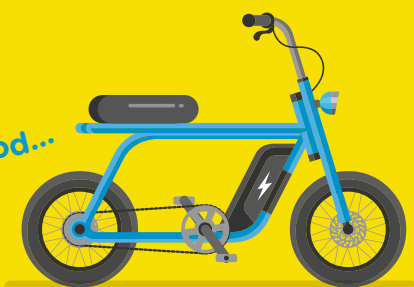
The following batteries are accepted under the LMT collection program:

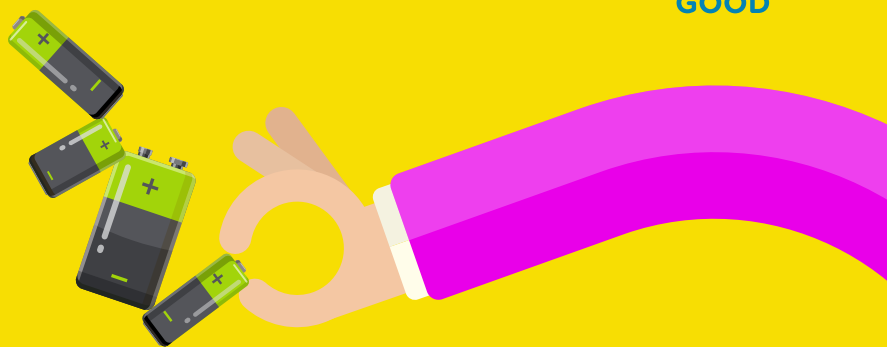
- Batteries used in electrically assisted bicycles (e-bikes).
- Batteries from motorized personal transportation devices such as scooters, hoverboards, and skateboards.
- Lithium Battery Packs

Collection Point Safety

- To ensure the safety of your site and staff:
- Follow all packaging and storage instructions provided
- Keep the collection area clean and organized

Recycle for good...





Collection Point Battery Safety

The following is a guideline for safe battery recycling

This information is for guidance purposes only. Please refer to your companies health and safety handbook where applicable.

Battery recycling should be included in your Risk Assessment process and Health & Safety in the workplace policy

Never mix other waste with battery waste and **never overfill** the WEEE Ireland Battery Box.

Do not lift heavy containers without assistance and always consult your designated Health and Safety officer for your company's procedures.

Never wrap waste batteries in tin or aluminium foil.

Never puncture, crush, or dismantle batteries.

Always store your batteries in an appropriate container. WEEE Ireland recommend you use our 5kg WEEE Ireland Box for storage.

Always store batteries **out of the reach of children**. For workplace recycling, please always consult your designated Health and Safety officer for your company's procedures.

Batteries for recycling should always be stored in a **cool dry weatherproof supervised place away from sunlight and direct heat**. Please consult your designated Health and Safety officer for your company's procedures.

Batteries to be recycled should **not be stored for long periods of time and should be returned promptly to WEEE Ireland** via your Collection point and participating retailers. For a list of collection points and retailers see weeeireland.ie

Where there is a variety of batteries stored in a WEEE Ireland Battery Box or a mix of various types of batteries (e.g Lithium/Alkaline) please tape the terminals of batteries with sticky tape and consult your Health and Safety Officer, and arrange to remove the batteries promptly to a WEEE Ireland Collection point – **see weeeireland.ie for a list of collection points in your area**.

Always consult your battery manufacturers waste guidelines on the battery packaging provided.

Always close the battery box when full and remove promptly to a collection point for recycling. **See weeeireland.ie for details of collection points near you**.

Battery events are extremely rare, but in the unlikely event that you become **concerned about a safety issue regarding a recycled battery you should:**

1. Call Emergency Services immediately and seek medical advice.
2. Notify your designated Workplace Health and Safety Officer immediately.
3. Contact weeeireland.ie with your feedback. You can give WEEE Ireland feedback, by emailing us at operations@weeeireland.ie



Recycle For Good,
because... **Every
Battery Counts!**

Collection Point Declaration & Disclaimer

Declaration:

By accepting a WEEE Ireland Battery Box into my/our workplace, and signing up for the WEEE Ireland Battery Box service, I/We consent to recycle batteries for WEEE Ireland based on the terms and conditions and Safety points outlined to me by WEEE Ireland & its subcontractors

I/We have read the Battery Safety Sheet provided to me/us and understand that my/our use of the website, and my/our acceptance of a WEEE Ireland Battery box signals my/our acceptance of the terms and conditions of the Battery Safety Sheet on behalf of my/our workplace and the terms and conditions of WEEE Ireland, as outlined in this document

My/Our continued use of the WEEE Ireland Website is deemed to be confirmation that I/we have read understood and accepted the Terms and Conditions of WEEE Ireland and the Battery Safety Sheet from WEEE Ireland.

Disclaimer

It is your responsibility to take due care and precautions when handling waste electrical and electronic equipment and waste batteries in your home, business or educational institution. Further information on health and safety aspects is available (www.WEEEIreland.ie/health-safety)

WEEE Ireland operates a WEEE and Waste Battery Compliance Scheme under approval from the Minister for Communications, Climate Action and Environment. This activity is carried out on a not for profit basis for the sole purpose of assisting members of the Scheme meet their compliance responsibilities as provided for under Article 30 of the Irish WEEE Regulations and Article 34 of the Irish Batteries Regulations to Producers who are certified by an approved body to be participating in a satisfactory manner in a scheme for the environmentally sound management of waste electrical and electronic equipment and batteries.

Use of the Scheme WEEE and waste battery collection, recycling and recovery service is on a voluntary basis, and is at the sole discretion and risk of individuals, businesses, educational institutions and other relevant parties. Parties must take all

reasonable precautions in relation to the collection and storage of these waste streams and ensure they comply with any relevant instructions provided by WEEE Ireland and or their contracted agents. It is the responsibility of all such parties to ensure they carry out appropriate risk assessments and training and have adequate insurance in place to provide cover for any risks which are relevant to WEEE and waste battery collection and storage at your premises.

WEEE Ireland (including its directors, officers and employees) is not liable for any special, direct, indirect or consequential damages and/or losses resulting from the storage, handling and collection for recycling and/or recovery of WEEE and Waste batteries. WEEE Ireland excludes all terms, conditions, warranties and representations, whether expressed or implied by statute or common law, to the fullest extent permitted by applicable law. Use of the WEEE Ireland WEEE and Waste Battery collection, recycling and recovery service including all related infrastructure such as battery boxes, WEEE cages and trolleys constitutes agreement to the above terms.



Recycle for good...



FREE BATTERY RECYCLING

Bring your waste batteries to any shop that sells batteries or electrical goods, that has a WEEE Ireland Blue Battery Box or to your nearest Local Authority recycling centre. If you have 10 or more full large 5 kilo size boxes contact WEEE Ireland for a collection.

How Much Is Needed For A Collection; 10 full large 5kg size Blue Battery Boxes, or 1 Full Battery Drum.



Blue areas indicate WEEE Ireland collection areas.

For further information, email operations@weeeireland.ie or log on to weeeireland.ie



Recycle For Good, because... **Every Battery Counts!**



Waste Battery Presentation Guide



All waste Batteries should be stored in a cool / dry area removed from the main facility if possible.
KMK Metals Recycling provide collection / treatment service for all Industrial, EV and Automotive
batteries. Contact KMK directly for quotation.