

Collection Point BATTERY SAFETY



The following is a guideline for safe battery recycling

Battery recycling should be included in your Risk Assessment process and Health & Safety in the workplace policy

Never mix other waste with battery waste and **never overfill** the WEEE Ireland Battery Box.

Do not lift heavy containers without assistance and always consult your designated Health and Safety officer for your company's procedures.

Never wrap waste batteries in tin or aluminium foil.

Never puncture, crush, or dismantle batteries.

Always store your batteries in an appropriate container. WEEE Ireland recommend you use our 5kg WEEE Ireland Box for storage.

Always store batteries **out of the reach of children**. For workplace recycling, please always consult your designated Health and Safety officer for your company's procedures.

Batteries for recycling should always be stored in a **cool dry weatherproof supervised place away from sunlight and direct heat**. Please consult your designated Health and Safety officer for your company's procedures.

Batteries to be recycled should **not be stored for long periods of time and should be returned promptly to WEEE Ireland** via your Collection point and participating retailers. For a list of collection points and retailers see weeireland.ie

Where there is a variety of batteries stored in a WEEE Ireland Battery Box or a mix of various types of batteries (e.g Lithium/Alkaline) please tape the terminals of batteries with sticky tape and consult your Health and Safety Officer, and arrange to remove the batteries promptly to a WEEE Ireland Collection point – see weeireland.ie for a list of collection points in your area.

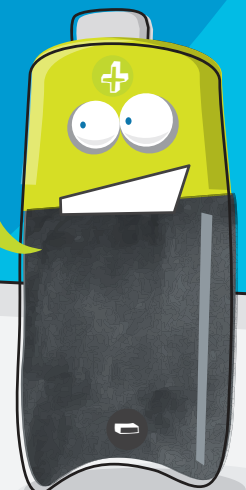
Always consult your battery manufacturers waste guidelines on the battery packaging provided.

Always close the battery box when full and remove promptly to a collection point for recycling. See weeireland.ie for details of collection points near you.

Battery events are extremely rare, but in the unlikely event that you become **concerned about a safety issue regarding a recycled battery you should:**

1. Call Emergency Services immediately and seek medical advice.
2. Notify your designated Workplace Health and Safety Officer immediately.
3. Contact weeireland.ie with your feedback. You can give WEEE Ireland feedback, by emailing us at operations@weeireland.ie.

WEEE Recycle anything with a plug or a battery



Collection Point DECLARATION & DISCLAIMER

Declaration:

By accepting a WEEE Ireland Battery Box into my/our workplace, and signing up for the WEEE Ireland Battery Box service, I/We consent to recycle batteries for WEEE Ireland based on the terms and conditions and Safety points outlined to me by WEEE Ireland & its subcontractors

I/We have read the Battery Safety Sheet provided to me/us and understand that my/our use of the website, and my/our acceptance of a WEEE Ireland Battery box signals my/our acceptance of the terms and conditions of the Battery Safety Sheet on behalf of my/our workplace and the terms and conditions of WEEE Ireland, as outlined in this document

My/Our continued use of the WEEE Ireland Website is deemed to be confirmation that I/we have read understood and accepted the Terms and Conditions of WEEE Ireland and the Battery Safety Sheet from WEEE Ireland.

Disclaimer

It is your responsibility to take due care and precautions when handling waste electrical and electronic equipment and waste batteries in your home, business or educational institution. Further information on health and safety aspects is available (www.WEEEIreland.ie/health-safety)

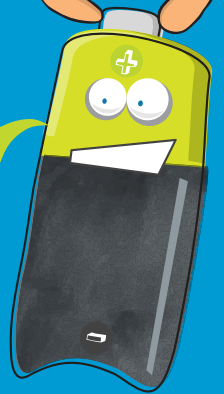
WEEE Ireland operates a WEEE and Waste Battery Compliance Scheme under approval from the Minister for Communications, Climate Action and Environment. This activity is carried out on a not for profit basis for the sole purpose of assisting members of the Scheme meet their compliance responsibilities as provided for under Article 30 of the Irish WEEE Regulations and Article 34 of the Irish Batteries Regulations to Producers who are certified by an approved body to be participating in a satisfactory manner in a scheme for the environmentally sound management of waste electrical and electronic equipment and batteries.

Use of the Scheme WEEE and waste battery collection, recycling and recovery service is on a voluntary basis, and is at the sole discretion and risk of individuals, businesses, educational institutions and other relevant parties. Parties must take all

reasonable precautions in relation to the collection and storage of these waste streams and ensure they comply with any relevant instructions provided by WEEE Ireland and or their contracted agents. It is the responsibility of all such parties to ensure they carry out appropriate risk assessments and training and have adequate insurance in place to provide cover for any risks which are relevant to WEEE and waste battery collection and storage at your premises.

WEEE Ireland (including its directors, officers and employees) is not liable for any special, direct, indirect or consequential damages and/or losses resulting from the storage, handling and collection for recycling and/or recovery of WEEE and Waste batteries. WEEE Ireland excludes all terms, conditions, warranties and representations, whether expressed or implied by statute or common law, to the fullest extent permitted by applicable law. Use of the WEEE Ireland WEEE and Waste Battery collection, recycling and recovery service including all related infrastructure such as battery boxes, WEEE cages and trolleys constitutes agreement to the above terms.

Safe
recycling is
WEEE Ireland's
priority



For battery collections or further information please visit weeireland.ie



This information is for guidance purposes only. Please refer to your companies health and safety handbook where applicable.