

Richard Broderick

The logo for the White Goods Association (WGA) features the letters 'WGA' in a bold, black, sans-serif font. The 'W' and 'A' are solid, while the 'G' is a stylized, outlined character.

White Goods Association

---



**ibec**

# WGA Objectives

- To promote the development of the white goods sector in Ireland
- To express and communicate and voice the views of the white goods industry
- To lobby on behalf of and to represent the industry to government departments and agencies, the European Commission and Parliament, other relevant national and international organisations and the media.
- To develop contact with counterpart associations and federations at European and International level
- To provide research and statistical information on the industry and within the association and externally on a published basis. This may include provision of appropriate aggregate market statistics to members and to the public at large.
- To provide analysis and information on the white goods sector and other relevant market information.
- The association will provide guidance, commentary and advice on issues including legal and regulatory developments of relevance to the white goods industry
- To provide a forum for the exchange of non-competitive information strictly adhering to the competition law guidelines as set out by IBEC.
- To assist in the establishment of a favourable operating environment in Ireland for the white goods industry.
- To negotiate on behalf of the members on issues of interest to the members of the association.

**WGA**

White Goods Association





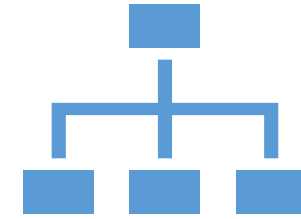
10+ OEM & Distributors



Represents majority FF  
LHA market in Ireland



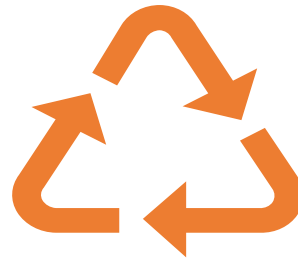
Founding Members of  
WEEE Ireland



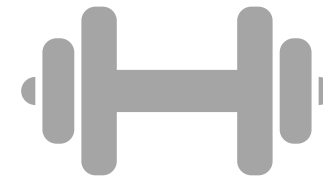
Sector Representation  
on the Board of WEEE  
Ireland & ERP



Significant % of EEE  
POM



Significant % of  
takeback and recycling  
results

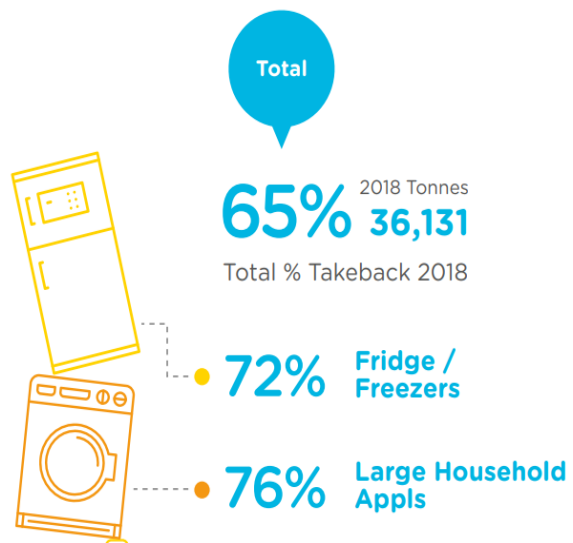


48% of WI tonnes were  
LHA in 2018

# WEEE Collection Results

## WEEE Targets

By 2019 Ireland needs to demonstrate a WEEE system where 65% of e-waste placed on the market is collected for responsible environmental management, with high recovery rates across all categories of equipment.



## Circular Business Models



*“Today, over 80% of Europeans’ requests for repair of a home appliance product resulted in actual repair because home appliance manufacturers keep spare parts in stock for current and old product models”. Applia 2019*



Example Applia Hungary developed a new repair training centre to support technical, environmental and knowledge learning for a new generation of independent and directly employed repair men & women

*[Image and references cited from https://www.applia-europe.eu/](https://www.applia-europe.eu/)*





## Appliance assistant

---

Got a problem with your NEFF appliance? Not any more! The NEFF service assistant is there to support you with fault diagnosis, tips and documents.

[Appliance assistant](#)



## Instruction manuals

---

Our instruction manuals will provide you with useful information which will help you to set up, maintain and use your NEFF home appliances.

[Find your manual](#)



## Help and support

---

Everything you need to know about maintenance and trouble-shooting as well as cleaning and repairing your appliance can be found here.

[Get support](#)



## Warranty registration

---

You should register all your appliances and warranties with NEFF to ensure we have full records in the event of any important appliance updates.

[Register now](#)